

Enhanced sensitivity using
Fujifilm's Silver Amplification technology

FUJIFILM SILVAMP TB LAM II



Product Features

Highly-Sensitive Detection Test for Tuberculosis in PLHIV

- Easy sample collection. Target specimen: Urine
- Target marker: Lipoarabinomannan (LAM)
- No additional instrument required
- Easy to use

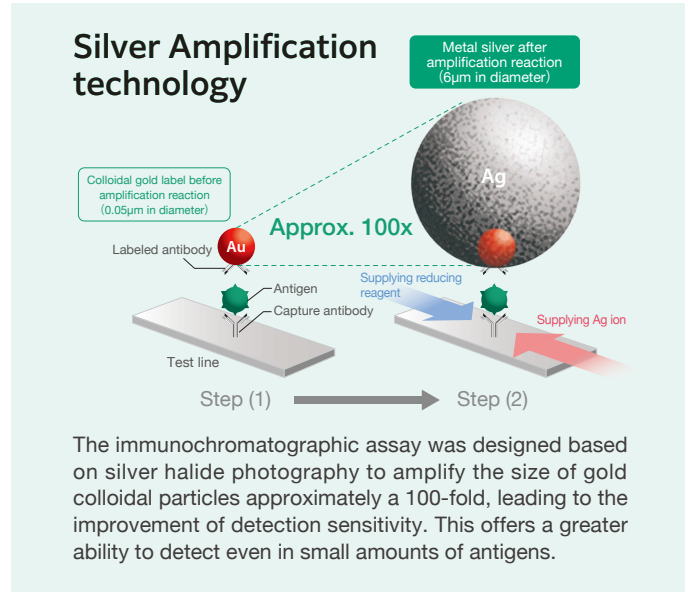
Performance results

Correlation with microscopy, cultures and genetic testing.

Sensitivity: 65.4% (85/130, 95% CI: 56.5-73.5%)

Specificity: 96.6% (84/87, 95% CI: 90.3-99.3%)

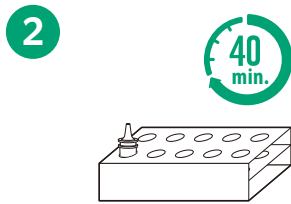
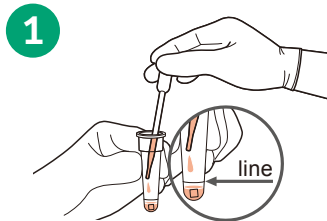
		Reference		
		Positive	Negative	Total
FUJIFILM SILVAMP TB LAM II	Positive	85	3	88
	Negative	45	84	129
	Total	130	87	217



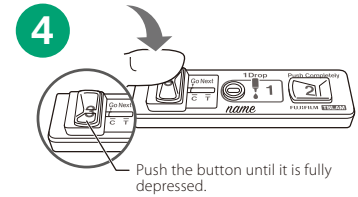
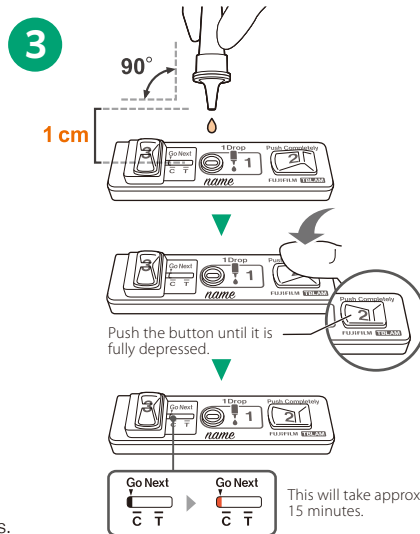
How to use

Tuberculosis test procedure

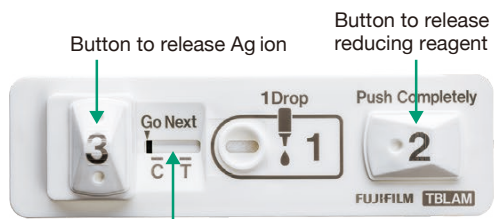
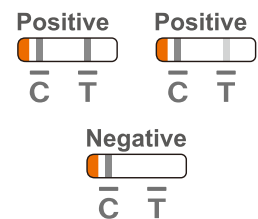
60 min from sample collection to result



*Refer to the Instruction for Use for official procedures.



RESULT



Go Next indicator, control and test line reading window

Kit contents

- FUJIFILM SILVAMP TB LAM II (10 tests)
- Test Cartridge and Reagent Tube 10 tests
 - Nozzle 10 pieces
 - Pipette 10 pieces
 - Tube Rack 1 piece
 - Quick Reference Guide 1 piece
 - Instructions for Use 1 piece



FUJIFILM

FUJIFILM Corporation

26-30, NISHIAZABU 2-CHOME, MINATO-KU, TOKYO 106-8620, JAPAN
<https://global.fujifilm.com/>